



# ™ PLAIN TROLLEY 1 TONNE

MODEL NO'S: PT1000.V3

Thank you for purchasing a Sealey product. Manufactured to a high standard, this product will, if used according to these instructions, and properly maintained, give you years of trouble free performance.

**IMPORTANT:** PLEASE READ THESE INSTRUCTIONS CAREFULLY. NOTE THE SAFE OPERATIONAL REQUIREMENTS, WARNINGS & CAUTIONS. USE THE PRODUCT CORRECTLY AND WITH CARE FOR THE PURPOSE FOR WHICH IT IS INTENDED. FAILURE TO DO SO MAY CAUSE DAMAGE AND/OR PERSONAL INJURY AND WILL INVALIDATE THE WARRANTY. KEEP THESE INSTRUCTIONS SAFE FOR FUTURE USE.



Refer to  
instruction  
manual



Wear protective  
headgear



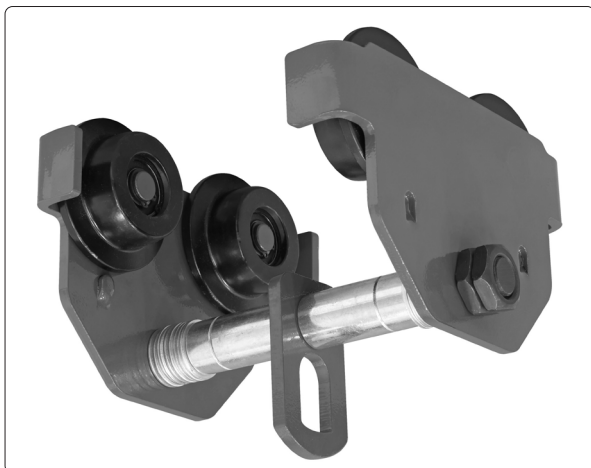
Wear protective  
gloves



Wear protective  
footwear

## 1. SAFETY

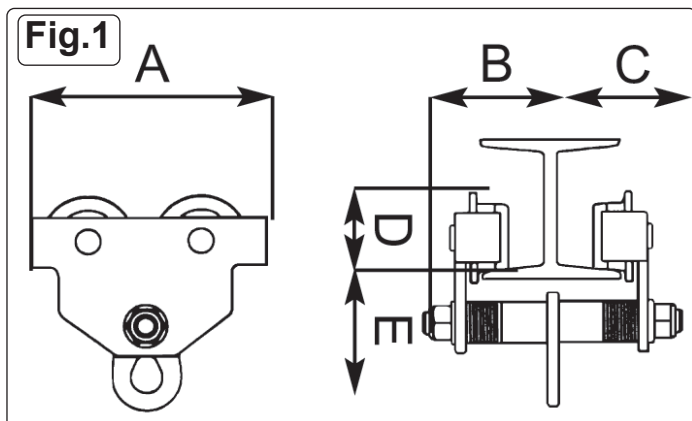
- ✓ Keep trolley and beams in good working order and condition. Follow the inspection requirements as described in Section 6. Maintenance. *Take immediate action to repair or replace damaged parts by contacting your supplier. Ensure that all accessory lifting devices are suitably certified. If damaged, remove from service immediately.*
- ✓ The trolley is designed to travel on a beam and carry a load up to the rated capacity. The capacity indicated on the trolley (see nameplate) is the maximum safe working load which must not be exceeded.
- ✓ **Keep** children and unauthorised persons away from the working area.
- ✓ **Keep** working area clean and tidy, free from unrelated materials and ensure that there is adequate lighting.
- ✓ **Ensure** that load does not exceed the maximum capacity of the trolley. Overloading the trolley is dangerous. Where appropriate, use only the lifting points recommended by the manufacturer of the item to be lifted, e.g. vehicle engine.
- ✓ **Ensure** that load does not exceed the maximum capacity of the I Beam that the trolley is attached to.
- ✓ **Before** lifting the load ensure that there are no obstacles which may snag the load whilst it is being lifted.
- ✓ When the load prevents adequate visibility of the zone in front of the load, there is a necessity to be assisted.
- ✓ It is necessary to carry out a risk assessment to avoid injuring due to over intensive use.
- ✓ When the load prevents adequate visibility of the zone in front of the load, there is a necessity to be assisted
- ✓ **To** avoid injury, be fully aware of your own and other persons locations in relation to the lifting, and lowering, of the load.
- ✓ **Keep** a sound footing and balance, and ensure the floor is not slippery.
- ✗ **DO NOT** harness the load at an angle or use any attachments not verified as fit for purpose.
- ✗ **DO NOT** allow the load to swing during lifting.
- ✓ Lower load with care, ensuring that you are fully aware of the condition of the surface onto which the load is to be placed.
- ✗ **DO NOT** position any part of your body beneath the load.
- ✗ **DO NOT** use this product to perform a task for which it is not designed.
- ✗ **DO NOT** use whilst under the influence of drugs, alcohol or intoxicating medication.
- ✗ **DO NOT** lift or transport loads while personnel are in the danger zone.
- ✗ **DO NOT** allow personnel to pass under a suspended load.
- ✗ **DO NOT** use the trolley for transportation of people.
- ✗ **DO NOT** use the trolley in explosive or corrosive environments.
- ✓ After lifting, **DO NOT** leave the load suspended for longer than necessary.
- ✓ Start moving the load only after it has been attached correctly and all personnel are clear of the danger zone.
- ✓ **When** not in use, store in a safe, dry, childproof area.
- ✓ **This trolley is designed for use within a garage or workshop environment.**
- **WARNING!** Failure to heed safety and warning instructions may result in damage and/or personal injury and will invalidate the warranty.



## 2. INTRODUCTION

Manufactured from high-quality steel for strength and durability. Powder-coated for long-lasting protection. Suitable for use with chain blocks, lever hoists and other lifting gear. Designed for mounting onto various widths of I-beam or RSJ. Includes anti-drop plates for added security.

## 3. SPECIFICATION



Model	Capacity	Track Width Adjustable Range	Minimum Curve Radius
PT1000.V3	1000kg	64- 140mm	1000mm

A	B	C	D	E
255mm	127.5mm	127.5mm	104mm	128mm

Model	Weight	Minimum Standard I-Beam Dimensions (D x W x Web):	Maximum Standard I-Beam Dimensions (D x W x Web)	Minimum Distance Between Spans:	Maximum Distance Between Spans:
PT1000.V3	7kg	125 x 75 x 5.5mm	250 x 125 x 7.5mm	2500mm	6000mm

## 4. INSPECTION / EXAMINATION

### 4.1. INSPECTION AND EXAMINATION OF TROLLEY BEFORE ASSEMBLY AND EACH USE.

- Before assembly and each use of the trolley, you must perform an inspection for damaged, loose, missing parts, corrosion, wear, or other irregularities (refer to Parts List for reference).
- The trolley must be examined immediately if it has been subject to an abnormal load or shock. It is recommended that such an examination is made by an authorised service agent.
- The owner and/or operator must be aware that repair of this equipment will require specialised knowledge and facilities. It is recommended that an annual examination of the trolley is made by an authorised service agent.
- Unauthorised parts may be dangerous and will invalidate the warranty.

**NOTE!** Please see the Definition of 'inspection' and 'examination' below.

### 4.2. INSPECTION:

Looking at and reviewing the trolley for defects and checking the operation without loading the trolley. This is much more than a check but does not normally require any part of the trolley to be dismantled. Inspections are instigated by the user.

### 4.3. EXAMINATION:

Verification that the trolley can safely continue in service including a functional test to verify that it operates within the required tolerances. An examination is more thorough than an inspection. All examinations and inspections should be carried out by a competent person.

## 5. ASSEMBLY

### 5.1. Gear Case Assembly (Fig.2)

- Place the gear case on a clean, stable surface ready for assembly.
- Align the shaft of the driven wheel (2) with the installed bearing (3). Carefully slide the shaft through the bearing until fully seated.
- Insert the bearing into the bore of the gear case (1). Use a bearing press or suitable tool to ensure it is seated evenly and securely.
- Fit the internal circlip (4) into the groove inside the gear case to retain the bearing. Confirm the circlip is properly seated and locked in place.
- Fit the external circlip (5) into the groove on the shaft outside the gear case. Ensure the circlip is properly engaged to prevent axial movement.
- Rotate the driven wheel to check for smooth operation. Verify all components are correctly installed and secured.
- Repeat the process for the opposite side.
- Before starting assembly, accurately measure the width of the beam to ensure proper fitment of spacers on the main pin. (Only use the number of spacers required, ensuring they are evenly distributed on both sides of the beam).
- Assemble main pin (10)
- Insert Main Pin (10) through the gear case assembly.
- Ensure Spacers 9 are placed on both sides of main pin:
  - This allows smooth operation.
- Spacers must be evenly distributed.
 

**NOTE:** The fit should be tight to the beam but not overly restrictive (i.e., no excessive movement).
- Attach suspension plate (11)
- Insert suspension plate 11 into the gearcase Assembly.

- 5.1.15. Secure with the following parts: Sleeve (8), bush (7), nut (6).  
5.1.16. These components secure the suspension plate in place within the gearcase.

Fig.2

Item	Description	Qty	Item	Description	Qty
1	Gear case assembly	2	7	Bush	2
2	Driven wheel	4	8	Sleeve	2
3	Bearing	4	9	Spacer washer	16
4	Internal circlip	4	10	Main pin	1
5	External circlip	4	11	Suspension plate / ring	1
6	Hex nut	4			

## 6. OPERATION

**NOTE: ENSURE YOU HAVE READ AND UNDERSTOOD THE SAFETY INSTRUCTIONS BEFORE YOU OPERATE THE TROLLEY.**

- 6.1. (Refer to Section 4 regarding inspection before each and every use).  
6.2. You must perform a risk assessment before undertaking any operations with the trolley.
- Connect the trolley to the load using a suitable **certified** chain hoist or similar. Ensure you are aware of the load weight, and check that it is within the capacity of the trolley and the support beam. Ensure you know the weight to be lifted.
  - Use only lifting points sufficient to hold the weight.
  - Lift only from directly above the load. **WARNING! DO NOT LIFT THE LOAD AT AN ANGLE!**
  - The load is moved by pulling the Drive Chain (19) attached to the face of the unit. **WARNING! you must seek assistance if the load size prevents adequate visibility of the zone in front of the load.**
  - When load has been secured, remove lifting sling, support beam etc. and place trolley in a safe location.
- ☐ **WARNING!** Ensure the trolley is mounted in such a way that the rollers CANNOT disengage for the beam at any time.

## 7. MAINTENANCE

**NOTE: The trolley MUST be kept clean and dry and must be maintained in accordance with these instructions.**

- 7.1. **Lubrication.**  
Oil all working parts monthly or more in dusty conditions.  
7.2. **Storage:** When not in use store in a safe, dry childproof location.

## 8. RESPONSIBILITIES

**The owner and/or operator shall study these instructions and retain them for future use.**

### a) Understanding instructions and warnings.

The owner and/or operator shall understand the operating instructions and warnings before operating the trolley. Warning information must be emphasised and understood. If the operator is not fluent in English, the product instructions and warnings must be read to, and discussed with, the operator in the operator's native language by the owner, making sure the operator understands the contents.

### b) Damaged Trolleys.

Any trolley which appears to be damaged, badly worn, or operates abnormally **MUST BE REMOVED FROM SERVICE!** It is recommended that necessary repairs be made by an authorised service agent.

### c) End of service.

Through years of normal wear, the trolley will eventually become unserviceable. When this happens dispose of in accordance with local authority regulations.



### ENVIRONMENT PROTECTION

Recycle unwanted materials instead of disposing of them as waste. All tools, accessories and packaging should be sorted, taken to a recycling centre and disposed of in a manner which is compatible with the environment. When the product becomes completely unserviceable and requires disposal, drain any fluids (if applicable) into approved containers and dispose of the product and fluids according to local regulations.

**Note:** It is our policy to continually improve products and as such we reserve the right to alter data, specifications and component parts without prior notice. Please note that other versions of this product are available. If you require documentation for alternative versions, please email or call our technical team on [technical@sealey.co.uk](mailto:technical@sealey.co.uk) or 01284 757505.

**Important:** No Liability is accepted for incorrect use of this product.

**Warranty:** Guarantee is 12 months from purchase date, proof of which is required for any claim.



REGISTER YOUR PURCHASE HERE

**Jack Sealey Ltd t/a Sealey Group**, Kempson Way, Suffolk Business Park, Bury St Edmunds, Suffolk, IP32 7AR UK  
**Jack Sealey (EU) Ltd t/a Sealey Group**, Farney Street, Carrickmacross, Co. Monaghan, A81 PK68 Ireland  
**Tel:** 01284 757500 • **Email:** [sales@sealey.co.uk](mailto:sales@sealey.co.uk) • **Web:** [www.sealey.co.uk](http://www.sealey.co.uk)